

10 WEEKS • 10 WINNERS
\$10,000 CASH PRIZE

Summer Days of GIVEAWAYS

CLICK HERE TO ENTER TO WIN!

StLouis



Gus[®]
ATWOOD SOFA
AVAILABLE EXCLUSIVELY AT NICHE

| | | | | | | | | |
|---------------|----------|----------|------------|------------|--------|-------------|----------------------|--------|
| EVENTS | CONTESTS | CALENDAR | PARTY PICS | CITY GUIDE | STORE | NEWSLETTERS | <input type="text"/> | SEARCH |
| DINING | ARTS | NEWS | STYLE | HOME | FAMILY | HEALTH | BEST | |

Whats New in Brew: St. Louis Microbreweries

May 16, 2014



Free Sounds of Summer Concert Series

FREE OUTDOOR CONCERTS

CHESTERFIELD AMPHITHEATER

chesterfieldamphitheater.com

SLM RESTAURANT GUIDE

Search from more than 1,500 St. Louis restaurants.

WHERE

All

FIND

SLM GUIDES

WHAT

Arts & Culture

FIND

Vote for your favorite microbreweries in the 2014 St. Louis Microbrewery Bracket!

Pint-Size Brewers

Though small, these breweries are making big waves.

4 Hands Brewing Co.

The best part of having a beer in 4 Hands' tasting room isn't the delicious food from Dave Bailey's Fifth Wheel, nor the fantastic ales produced in-house. It's the enormous windows that let you see how your bright-orange Contact High wheat ale is made, as well as—given how fast 4 Hands is growing—witness a brewery expanding before your eyes. 1220 S. Eighth, 314-436-1559, 4handsbrewery.com.

The Civil Life Brewing Company

The Civil Life might be crowned "Best Place for a Beer and a Book." By far the coziest brewery around, it offers a laid-back environment where you can enjoy a superior American brown ale, a board game, or conversation. Paired with a sandwich from chef Brendan Kirby, a visit makes for a lovely Sunday afternoon.



- CURRENT ISSUE
- SUBSCRIBE NOW
- GIVE A GIFT
- DIGITAL SUBSCRIPTIONS
- ISSUE ARCHIVE
- MANAGE MY ACCOUNT

GET ON OUR LIST

Sign-up for our free e-newsletters, and you'll never miss a beat.

- House Call
- Inside Look
- On the Burner
- The Scoop

(Just remember: It's cash-only.) 3714 Holt, thecivillife.com.

Perennial Artisan Ales

Producing some of the most sought-after beers around, Perennial has established itself on the city's southern outskirts. To see what makes the brewery so distinctive, visit on a Thursday night, when Perennial releases a new small-batch beer each week, like BA 17, a barrel-aged imperial stout brewed with chocolate malt, cacao nibs, and fresh mint. 8125 Michigan, 314-631-7300, perennialbeer.com.

Six Row Brewing Company

Nestled just south of Saint Louis University, along Forest Park Avenue, Six Row provides a respite for those seeking something besides fizzy yellow lager. Not only can you find the popular Whale, double IPA, and porter year-round, you can also sample Six Row's special offerings, not available anywhere else. 3690 Forest Park, 314-531-5600, sixrowbrewco.com.

On the Road

Four Breweries worth a summer day trip

2nd Shift Brewing

This brewery and "saloon" is tucked away at the edge of Cedar Creek, the Vatterott family-owned lodge and conference center in New Haven. The site has a rich history as both a Marianist retreat house and an off-season hideaway, where 1930s Cardinals star pitcher Burleigh Grimes would stay. Sit and sample beers like the Cat Spit Stout, Ratsalad, and Liquid Spiritual Delight. (The last option is best enjoyed while listening to "Lucy in the Sky with Diamonds.") The brews are quirky, yes, but also high-quality and undoubtedly memorable. 1401 Olive, New Haven, 537-237-3672, 2ndshiftbrewing.com.

Charleville Brewing Co.

Charleville Brewing Company, a winery in

Ste. Genevieve that has branched into brewing, offers a small tasting room that features hop-head pleasers like the Hoptimistic IPA and Ale Mucho Hoppo, as well as a barley wine that won silver at the Great American Beer Festival in 2012. That's not to mention a nice selection of seasonal and year-round brews, including the popular Half-Wit Wheat and Tornado Alley Amber Ale. 16937 Boyd, Ste. Genevieve, 573-756-4537, charlevillevineyard.com.

Crown Valley Brewing

The brewing arm of a nearby winery of the same name, Crown Valley isn't quite as stylistically "out there" as other craft breweries. With former A-B brewmaster Carl Wiersma overseeing the operation, though, there's always a solid range of beers and ciders. 23589 State Route WW, Ste. Genevieve, 866-207-9463, crownvalleybrewery.com.

Scratch Brewing Co.

If you're debating whether to make the drive to the edge of Shawnee National Forest, consider this fact from Scratch's website: "The brewery has an ever-rotating selection of traditional styles, enhanced by the innovative addition of local ingredients, including nettle, elderberry, ginger, dandelion, maple sap, and a variety of wood additions, among others." In other words, a trip to the Southern Illinois wilderness is an adventure in more ways than one. (Note that Scratch is also cash-only.) 264 Thompson, Ava, Ill., 618-426-1415, scratchbeer.com.

New Brews

Five microbreweries on the rise

Cathedral Square Brewery

When Cathedral Square moves into a former church in the Central West End next year, there'll be room for a brewery, a restaurant, and more. cathedralsquarebrewery.com.

Excel Bottling Company

In 2012, after more than 75 years in business, this bottling outfit in Breese, Ill., added beer to its sugar cane-soda portfolio. Today, it offers six varieties. excelbottling.com.

Main & Mill Brewing Co.

Excitement's been mounting in Jefferson County for father and son Barry and Denny Foster's brewery and restaurant, housed in an 1890s building. At press time, the Fosters hoped to open in September. mainandmillbrewingco.com.

Recess Brewing

When this community-supported brewery opens later this year, it will roll out a new type of business

Weekender

Enter your email... [SIGN UP](#)

CONNECT WITH US



WIN A KIDS IN THE CITY GETAWAY WEEKEND

at Trump Hotel Chicago[®], with a 2-night stay in a deluxe king room, special Trump kids gift, and more!

TRUMP HOTEL CHICAGO

CALENDAR

TUE WED THU FRI SAT SUN MON

Tuesday
July 29, 2014

Mosaic Stepping Stone
Jul 29, 2014 6:30 PM - 8:30 PM
Perennial

St. Louis Craft Beer Week
Jul 26, 2014 - Aug 3, 2014
Craft Beer Cellar

[SEARCH EVENTS](#) [SUBMIT YOURS](#)

BUZZWORTHY

ADVERTISING | PROMOTIONS | OPPORTUNITIES

WIN A KIDS IN THE CITY GETAWAY WEEKEND

at Trump Hotel Chicago[®], with a 2-night stay in a deluxe king room, special Trump kids gift, and more!

TRUMP HOTEL CHICAGO

MOST POPULAR

TAKE CARE 2014

REVIEW: FARMHAUS

A BLOCKBUSTER SUMMER IN ST. LOUIS

model, with two membership levels. recessbrewing.com.

Templar Brewing

Unlike other new breweries in the area, Templar Brewing's product will only be distributed in kegs through wholesalers. At press time, Templar was just ready to get started brewing. templarbrewing.com.

4 Hands Brewing Co.

The best part of having a beer in 4 Hands' tasting room isn't the delicious food from Dave Bailey's Fifth Wheel, nor the fantastic ales produced in-house. It's the enormous windows that let you see how your bright-orange Contact High wheat ale is made, as well as—given how fast 4 Hands is growing—witness a brewery expanding before your eyes. 1220 S. Eighth, 314-436-1559, 4handsbrewery.com.

The Civil Life Brewing Company

The Civil Life might be crowned "Best Place for a Beer and a Book." By far the coziest brewery around, it offers a laid-back environment where you can enjoy a superior American brown ale, a board game, or conversation. Paired with a sandwich from chef Brendan Kirby, a visit makes for a lovely Sunday afternoon. (Just remember: It's cash-only.) 3714 Holt, thecivillife.com.

Perennial Artisan Ales

Producing some of the most sought-after beers around, Perennial has established itself on the city's southern outskirts. To see what makes the brewery so distinctive, visit on a Thursday night, when Perennial releases a new small-batch beer each week, like BA 17, a barrel-aged imperial stout brewed with chocolate malt, cacao nibs, and fresh mint. 8125 Michigan, 314-631-7300, perennialbeer.com.

Six Row Brewing Company

Nestled just south of Saint Louis University, along Forest Park Avenue, Six Row provides a respite for those seeking something besides fizzy yellow lager. Not only can you find the popular Whale, double IPA, and porter year-round, you can also sample Six Row's special offerings, not available anywhere else. 3690 Forest Park, 314-531-5600, sixrowbrewco.com.

On the Road

Four Breweries worth a summer day trip.

2nd Shift Brewing

This brewery and "saloon" is tucked away at the edge of Cedar Creek, the Vatterott family-owned lodge and conference center in New Haven. The site has a rich history as both a Marianist retreat house and an off-season hideaway, where 1930s Cardinals star pitcher Burleigh Grimes would stay. Sit and sample beers like the Cat Spit Stout, Ratsalad, and Liquid Spiritual Delight. (The last option is best enjoyed while listening to "Lucy in the Sky with Diamonds.") The brews are quirky, yes, but also high-quality and undoubtedly memorable. 1401 Olive, New Haven, 537-237-3672, 2ndshiftbrewing.com.

Charleville Brewing Co.

Charleville Brewing Company, a winery in St. Genevieve that has branched into brewing, offers a small tasting room that features hop-head pleasers like the Hoptimistic IPA and Ale Mucho Hoppo, as well as a barley wine that won silver at the Great American Beer Festival in 2012. That's not to mention a nice selection of seasonal and year-round brews, including the popular Half-Wit Wheat and Tornado Alley Amber Ale. 16937 Boyd, Ste. Genevieve, 573-756-4537, charlevillevineyard.com.

Crown Valley Brewing

The brewing arm of a nearby winery of the same name, Crown Valley isn't quite as stylistically "out there" as other craft breweries. With former A-B brewmaster Carl Wiersma overseeing the operation, though, there's always a solid range of beers and ciders. 23589 State Route WW, Ste. Genevieve, 866-207-9463, crownvalleybrewery.com.

Scratch Brewing Co.

If you're debating whether to make the drive to the edge of Shawnee National Forest, consider this fact from Scratch's website: "The brewery has an ever-rotating selection of traditional styles, enhanced by the innovative addition of local ingredients, including nettle, elderberry, ginger, dandelion, maple sap, and a variety of wood additions, among others." In other words, a trip to the Southern Illinois wilderness is an adventure in more ways than one. (Note that Scratch is also cash-only.) 264 Thompson, Ava, Ill., 618-426-1415, scratchbeer.com.

New Brews

Five microbreweries on the rise

Cathedral Square Brewery

THE BEST NEW RESTAURANTS IN ST. LOUIS

THE TOP 10 THINGS TO DO THIS JULY IN ST. LOUIS

When Cathedral Square moves into a former church in the Central West End next year, there'll be room for a brewery, a restaurant, and more. cathedralsquarebrewery.com.

Excel Bottling Company

In 2012, after more than 75 years in business, this bottling outfit in Breese, Ill., added beer to its sugar cane-soda portfolio. Today, it offers six varieties. excelbottling.com.

Main & Mill Brewing Co.

Excitement's been mounting in Jefferson County for father and son Barry and Denny Foster's brewery and restaurant, housed in an 1890s building. At press time, the Fosters hoped to open in September. mainandmillbrewingco.com.

Recess Brewing

When this community-supported brewery opens later this year, it will roll out a new type of business model, with two membership levels. recessbrewing.com.

Templar Brewing

Unlike other new breweries in the area, Templar Brewing's product will only be distributed in kegs through wholesalers. At press time, Templar was just ready to get started brewing. templarbrewing.com.

JUNE 2014

Do you like this?

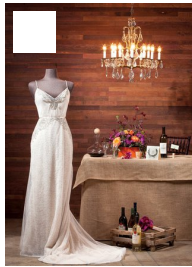
Like 3 people like this. Be the first of your friends.

RSS Print

Related



Q&A: A Conversation With Jerry Schlichter
May 16, 2014



Vineyard Vows
May 16, 2014



What It's Like to Be a Hospital Helicopter Pilot
May 16, 2014



Review: 801 Chophouse
May 16, 2014

Comments

Type subject here...

From classic to contemporary, Vellum has the perfect invitation for you! This charming boutique provides an enormous selection of wedding invitations, save the dates, programs, menus, thank you notes and more!

Advertising Billing Contact Jobs FAQ Awards

Copyright 2014 St. Louis Magazine. All rights reserved.

Built with Metro Publisher™